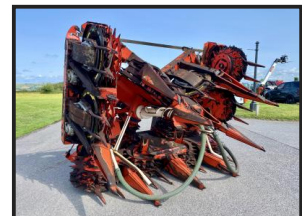




H. CURTIS & SONS

Kemper 375



£POA

Kemper 375, 2010, 10 row maize header, Claas Fitment, set for 494 / 496 / 497 / 498 series, can be set to 491 and 492 series if needed, latrell float, twin speed, water cooled clutches, short crop kit, cob catchers

Product Details

<i>Category/Type</i>	<i>Attachments & Other Machinery</i>
<i>Make</i>	<i>Kemper</i>
<i>Model</i>	<i>375</i>
<i>Year</i>	<i>2010</i>
<i>Hours</i>	<i>-</i>

Stanton Wick Farm, Pensford, Bristol, UK

Tel: 01761 490 372

hcurtis.co.uk andrew@hcurtis.co.uk